



40 Dt diesel

30 Dt diesel

22 Dt diesel

2400 t paraffin

1800 t paraffin

1300 paraffin

40 Dt Diesel Heater



Powerful

- The high quality ventilation fan of the 40 Dt has enough power to efficiently heat up even 15m long boats



Quiet

- The Wallas 40D is easily the quietest heater in its class. In most applications, you won't even know it's running!
- Laminar combustion guarantees neighboring boats can also enjoy the silence of nature



Reliable

- We grant a 3 year warranty for all our products
- To ensure highest quality, every single Wallas product is manually tested before delivery



The Wallas PI control panel includes the following functions:



- Smooth PI-controlled adjusting by thermostat
- Manual adjusting
- Last mode's memory (thermostat or manual)
- Two-step air boost function
- Fresh air ventilation
- Sun-switch
- LED background lights
- Protection against accidental start and stop (child-safe)
- Flush mounted or surface mounted

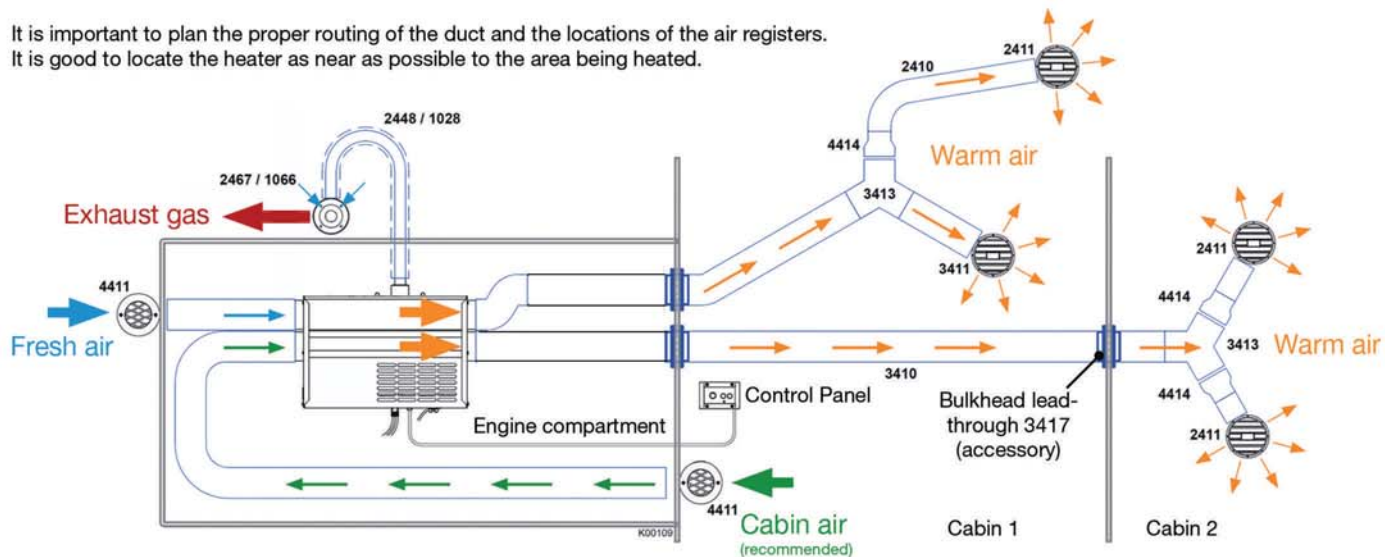
Enjoy the feeling of warmth in your boat with Wallas diesel heaters. The Wallas PI –thermo control automatically adjusts the heat output to the correct level to keep the temperature just where you want it.



Wallas Dt heaters can be installed in a lazarette, a closet, behind seating or in an engine room, thanks to dedicated makeup air inlet fittings.

Example of Dt heater installation in engine room or other location outside the cabin:

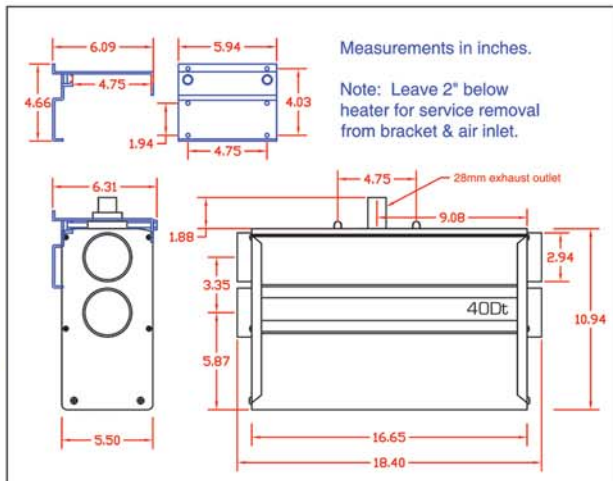
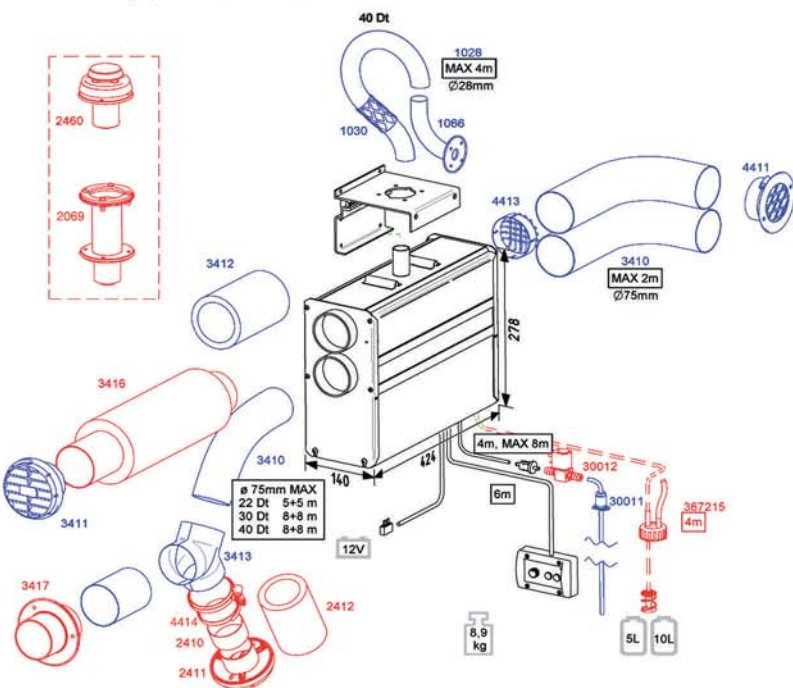
It is important to plan the proper routing of the duct and the locations of the air registers. It is good to locate the heater as near as possible to the area being heated.



The standard package contains:

- Heater
- Control panel
- Mounting bracket
- Power cable of 4 meters and fuse
- Fuel pipe of 4 meters with filter

40Dt



Installation accessories

- 3410 Outlet & intake ducting
- 3411 Outlet grill
- 4411 Inlet grill
- 3412 Insulation hose
- 2448 Exhaust tube (coaxial)
- 2467 Hull lead-through
- 4413 Intake grill (if duct not used)
- 3413 Warm air 3-way divider

Options

Technical specifications



9 - 15 m



Model:	40 Dt
Fuel:	Diesel
Power:	1.5 kW - 4 kW
Operating voltage:	12V
Fuel consumption:	6.8 - 13.5 oz/h
Electricity consumption:	1.0 - 3.9 A
Heat vent:	51 - 86 cfm
Special features:	Fresh air vent



2144 Westlake Avenue N., Suite D - Seattle, WA 98109 USA
 Toll Free: 1-888-606-6665
 Phone: 206-285-3675 Fax: 206-285-9532
 info@scanmarineusa.com - www.scanmarineusa.com