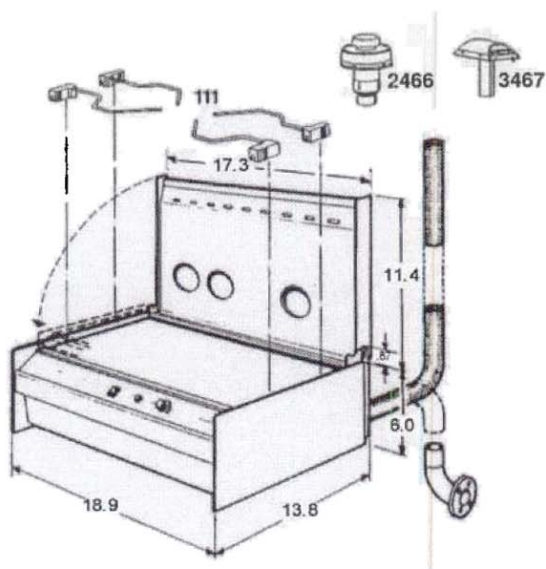


Wallas Safeflame Ceramic Diesel 125DP

Please note: The model 125DP and 125DU were model numbers designated by Scan Marine Equipment Inc, which describe Wallas model 95DP and 95DU respectively, when each was fitted with Wallas model 25 lids.



Note: Since the 125DP is simply a counter top version of the 125DU (flush mount), most issues described in this manual are common to both the DP and DU versions.

Fuel:	Diesel Oil or Kerosene
Fuel consumption:	3-5 oz./hr
Heat effect:	LH Zone 3070-6150 Btu. RH Zone 850-2050/
Supply voltage:	11 – 14.5 V
Current Consumption:	During operation 0.15 A at start 8 Amp. 4.5 min.
Voltage monitor:	Indic. & autom. cut-out.
Overheat cut-out:	Indic. & auto-reset
Weight:	approx. 19 lbs.

Safeflame ceramic cooker is a safe, closed combustion, diesel cooker without open flames. The combustion gases and the water vapors produced by the combustion are exhausted out. The fuel is drawn from a separate fuel tank below the cooker. As no fuel pressure exists either in the cooker or in the fuel tank there is no explosion risk.

The cooker draws the air for combustion from the cabin and works as an evacuation ventilator keeping the cabin ventilated and dry.

Characteristics of the Ceramic hot plate

The heated zones are inside the ring line marked on the Ceramic surface. The heat of the two zones is smoothly adjustable with the heat regulation knob so that the left side zone has always twice the heat of the right zone. The desired effect can also be adjusted by moving the pot from hotter to cooler area outside or between the ring zones. As the heat radiation effect is high with a ceramic cooking plate it is ideally suited for baking and cooking.

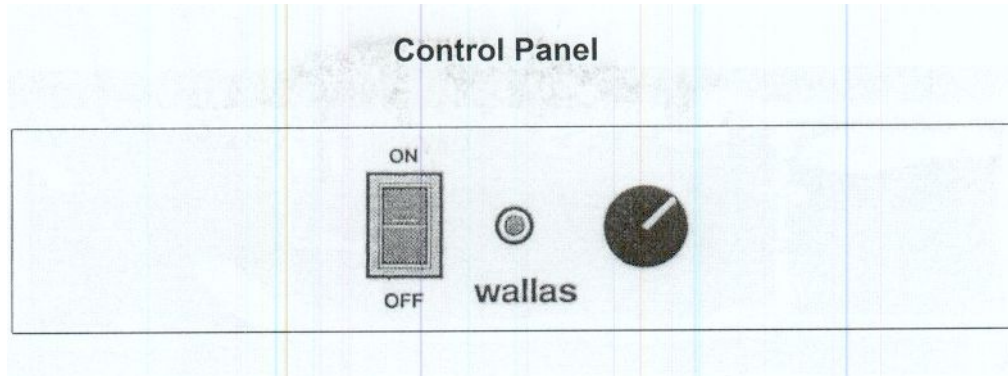
Maintenance

The Ceramic surface requires careful maintenance to keep in nice condition. The surface must be wiped clean with a moist cloth and dried after every use. Normal liquid cleaning agents can be used or a special cleaner for Ceramic surfaces. Burned-on stuffs can be removed with a spatula. Calcium stains can be removed with acid agents as vinegar or lemon. It is important that the surface is always wiped dry after cleaning.

NOTE!

- (1) The stove can not be used as a heater without the heater lid closed.
- (2) The stove is made for use at sea level.

Wallas Safeflame Ceramic Diesel 125DP



START

Heating is started automatically by switching the power switch to the ON position. The switch light will illuminate indicating that the heater is on.

A flashing switch light indicates low voltage. Check for a discharged battery, poor contact in the fuse holder or wire connections, or a power cable that is too small for the length of the run. If the flashing light continues after the 4½ minute start cycle is completed, or occurs during operation the cooker will switch off automatically.

Re-Start (after switching off) can not be made until the power switch has been off for 10 minutes, and not before the red combustion light has stopped blinking.

COMBUSTION PILOT LIGHT

The red pilot light indicates combustion. The light will be normally illuminate in approximately 1 to 3 min. after start. If it fails to illuminate, switch the power switch to OFF, wait approximately 10 min. (until blinking stops), then re-start.

Delayed function normally indicates a carbonized burner. After switching off the cooker the red pilot light will blink until the cooker is cooled down, approximately 10 min.

A flashing light also indicates that the overheating cut-out has switched off the fuel pump and cooker because of overheating. The overheating cut-out and fuel pump will reset automatically after the cooker is cooled down. Before continuing use, determine the cause of the overheating and take the necessary steps to correct it.

HEAT CONTROL

The heat control functions smoothly. **At start up the heat control knob should be set all the way to high until the red combustion control light illuminates.** When switching off the cooker heat control has no effect. Avoid unnecessary, quick back and forth adjusting of the heat control knob, this will cause sooting of the burner.

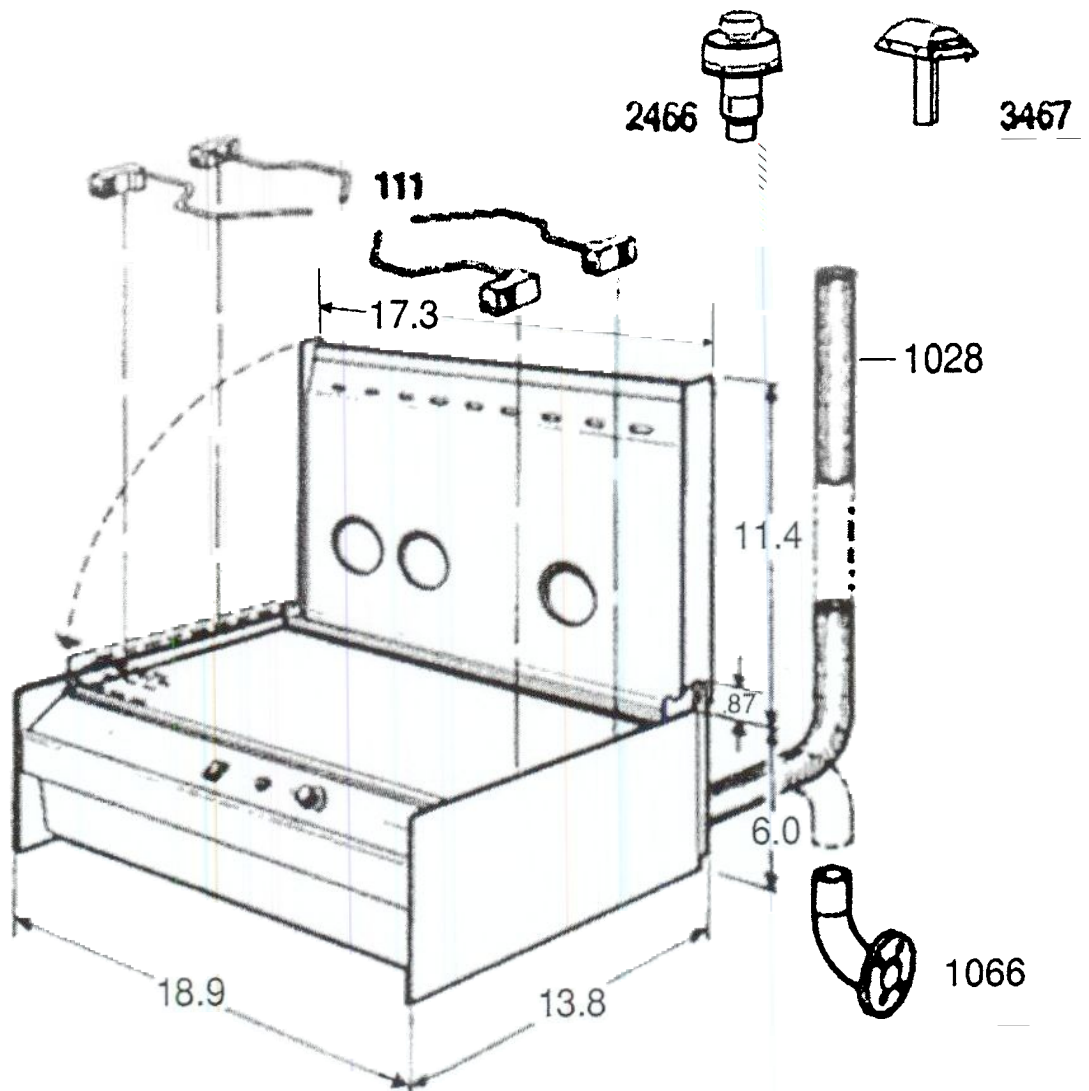
The cooker is switched off by turning the switch to the OFF position. The combustion blower continues for aftercooling until the red combustion pilot light stops blinking.

The main power to the cooker must never be switched off until aftercooling is completed, and the combustion light stops flashing.

Warning!

Never leave the cooker on high for a long time without supervision. When leaving the yacht always check that the cooker is turned off.

Wallas Safeflame Ceramic Diesel 125DP



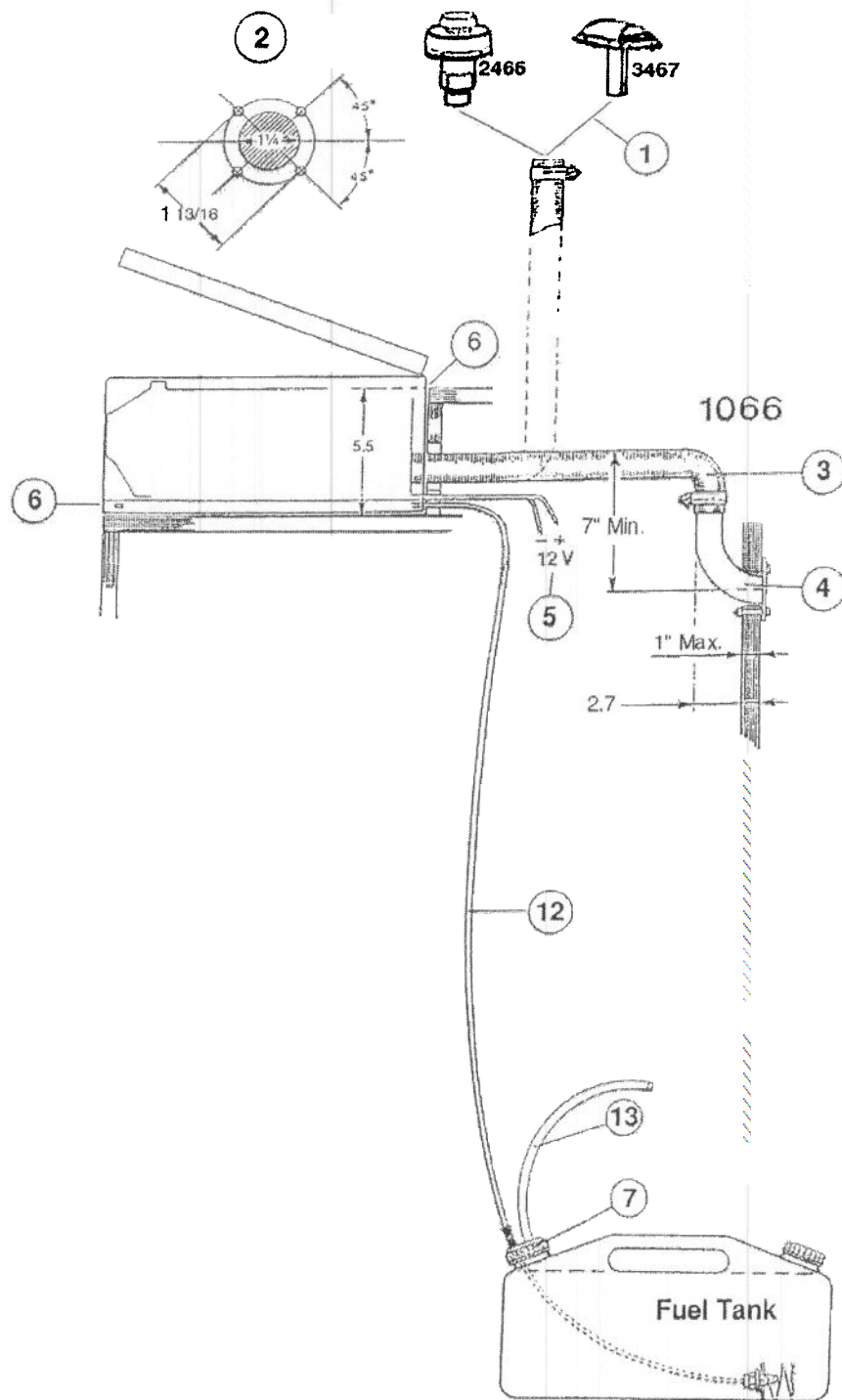
Wallas Safeflame Ceramic Diesel 125DP

INSTALLATION

Paragraph numbers refer to the numbers on page 5 and page 6.

- 1 Exhaust head location: The exhaust head type 3467 and type 2466 should be placed so that air flowing past it does not create back pressure against a vertical surface. Exhaust head type 2466 (see page 7) is for deck mount only. The head can be closed by pressing down and turning to the right. To open, turn to the left. The exhaust head is dismantled for mounting by pushing the spring.
- 2 The hole to be drilled for type 3467 and type 1066 exhaust fittings is 1 1/4 inches dia. (see pg 5). The hole to be drilled for type 2466 is 2" dia. (see pg 7). When mounting the exhaust fitting, care must be taken to seal the hole around the fitting with silicone or other quality-sealing compound.
- 3 Exhaust pipe #1028 is a flexible stainless steel pipe with an inside diameter of 1 1/8 inches. The maximum permissible length is 10 feet, and the run should as straight as possible. The exhaust pipe may be run through open ventilated spaces without insulation, however Insulation is required if the exhaust pipe is enclosed in a non ventilated area.
- 4 Exhaust through hull type 1066: The exhaust fitting 1066 must be mounted with the pipe pointing upwards and as close as possible to deck. This is to prevent water intake and diminish air pressure. (see drawing Page 5.)
- 5 Battery connection: (See Pg 13) Power supply wires must be connected to a battery bus and be no smaller than #10 AWG. The red wire is the positive connection; the blue wire is the negative connection. The positive (red wire) must have a 16 to 20 amp in-line fuse.
- 6 The area along the bottom front and the back wall of the stove must not be blocked as this allows air flow for ventilation under the stove.
- 7 Fuel tank cap: **IMPORTANT!** This cap must be closed tight to prevent fuel vapor leakage.
- 8 Fuel filter (sintered bronze) must be securely attached to the bottom of the fuel suction line to protect against impurities in the fuel and to hold the fuel pickup at the bottom of fuel tank.
- 9 Connector nut
- 10 Rubber gasket
- 11 Shield washer
- 12 Fuel suction tube: Transparent, polyamide, 5/2 mm dia. Cut fuel suction tube to suitable length (Refer to procedure on Page 6). **Do not coil.**
- 13 Tank vent tube: Transparent PVC 10/7 mm dia.
- 14 Screw collar ring
- 15 Rubber sleeve
- 16 Tank connector plate
- 17 Rubber gasket
- 18 Spiral shield: Minimizes condensation water intake by holding the suction end off tank bottom

Wallas Safeflame Ceramic Diesel 125DP

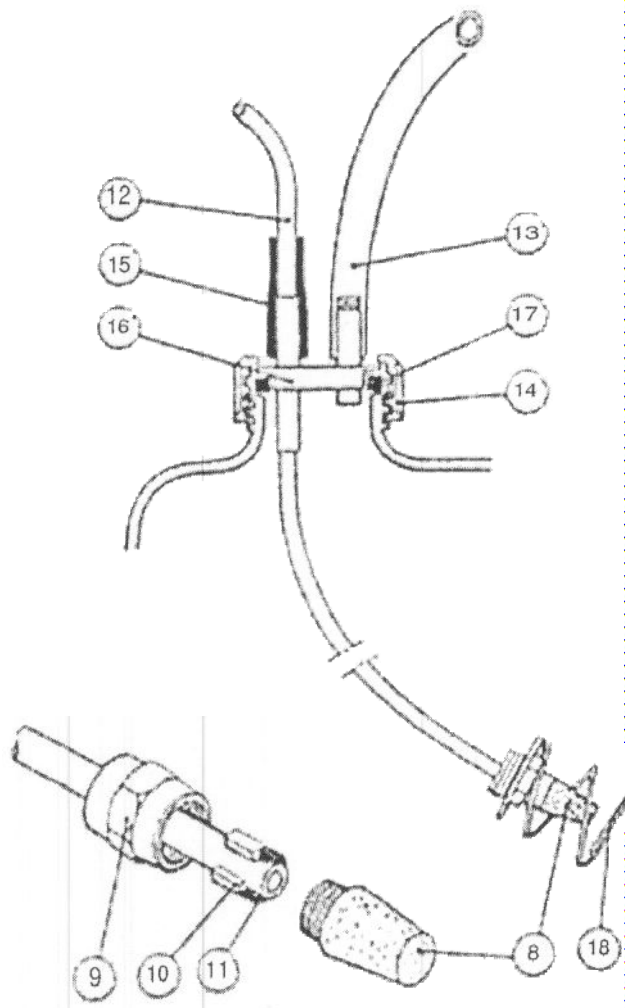


Wallas Safeflame Ceramic Diesel 125DP

To shorten the fuel tube

Refer to the numbers in the picture below.

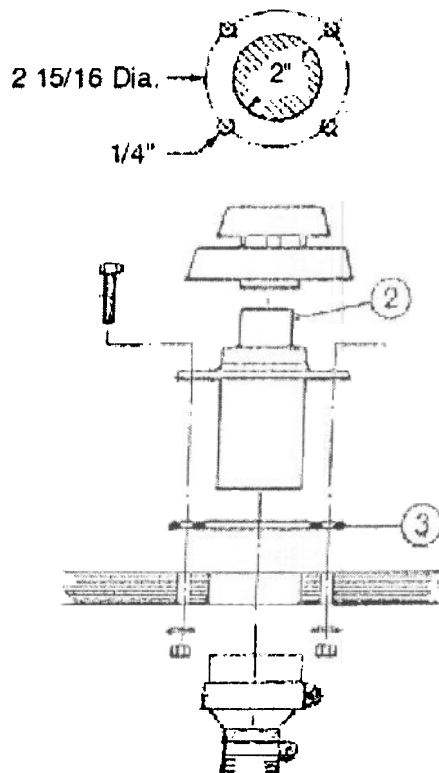
1. Push #18 spring back.
2. Unscrew #7 fuel filter.
3. Remove #9, #10 & #11 nut and fittings.
4. Open #15 rubber sleeve at the top with a small screwdriver.
5. Insert a little soapy water or detergent into the crack.
6. Pull the fuel tube through.



Wallas Safeflame Ceramic Diesel 125DP

DECK EXHAUST HEAD 2466

Hole Size 2" Dia.



1 Exhaust head 2466 closes by pressing down and turning clock-wise. Opens by turning counter-clockwise.

2 Exhaust head opens for mounting by pressing in the pin [2] with forefinger from inside or with screwdriver for example from outside.

3 **Gasket:** Important that the gasket **surfaces** and the through hole are carefully sealed with silicone sealant.

Wallas Safeflame Ceramic Diesel 125DP

Installation of Fuel Pickup Tube in Stationary Fuel Tank

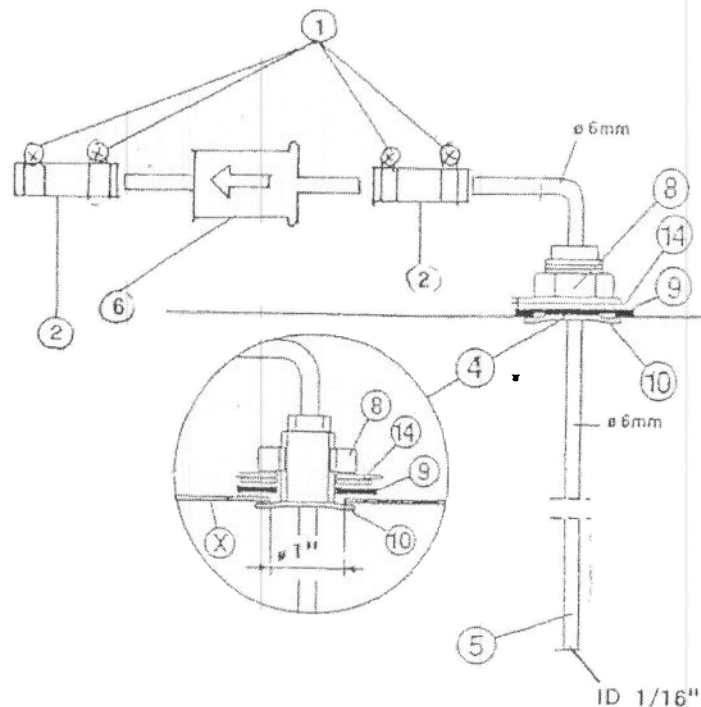
- A) Cut a 25mm (1")dia hole into the fuel tank.
- B) Cut the fuel pickup tube (#5) to length so that the end of the tube is 2"-3" from the tank bottom.
- C) Insert the pickup tube into the tank and assemble the rubber gasket, gasket compression washer, and locking nut onto the tube as shown.

PARTS

- 1 Clamp
- 2 Rubber hose
- 4 Pickup tube mounting, hole 25mm (1")dia.
- 5 Pickup tube
- 6 Fuel filter
- 8 Locking nut
- 9 Rubber gasket
- 10 Holder arm
- 14 Gasket compression disc

The fuel to the heater must always be filtered.

The fuel filter and the pick up tube must be Wallas' own accessory or similar size. The capacity of the fuel pump is insufficient when using a larger filter.

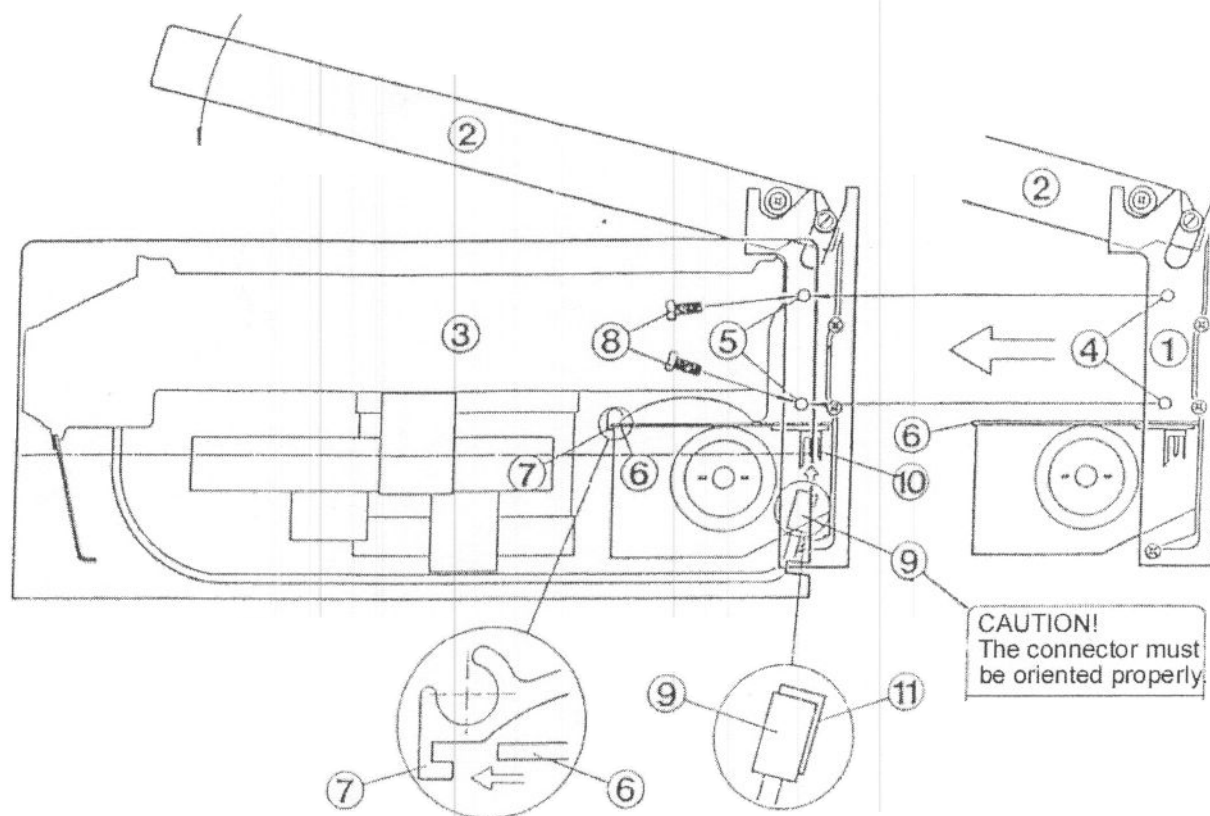


Fuel Suction Tube Kit With Inline Filter For Main Fuel Tank (Part No. 30011)

Wallas Safeflame Ceramic Diesel 125DP

Blower Unit type 25

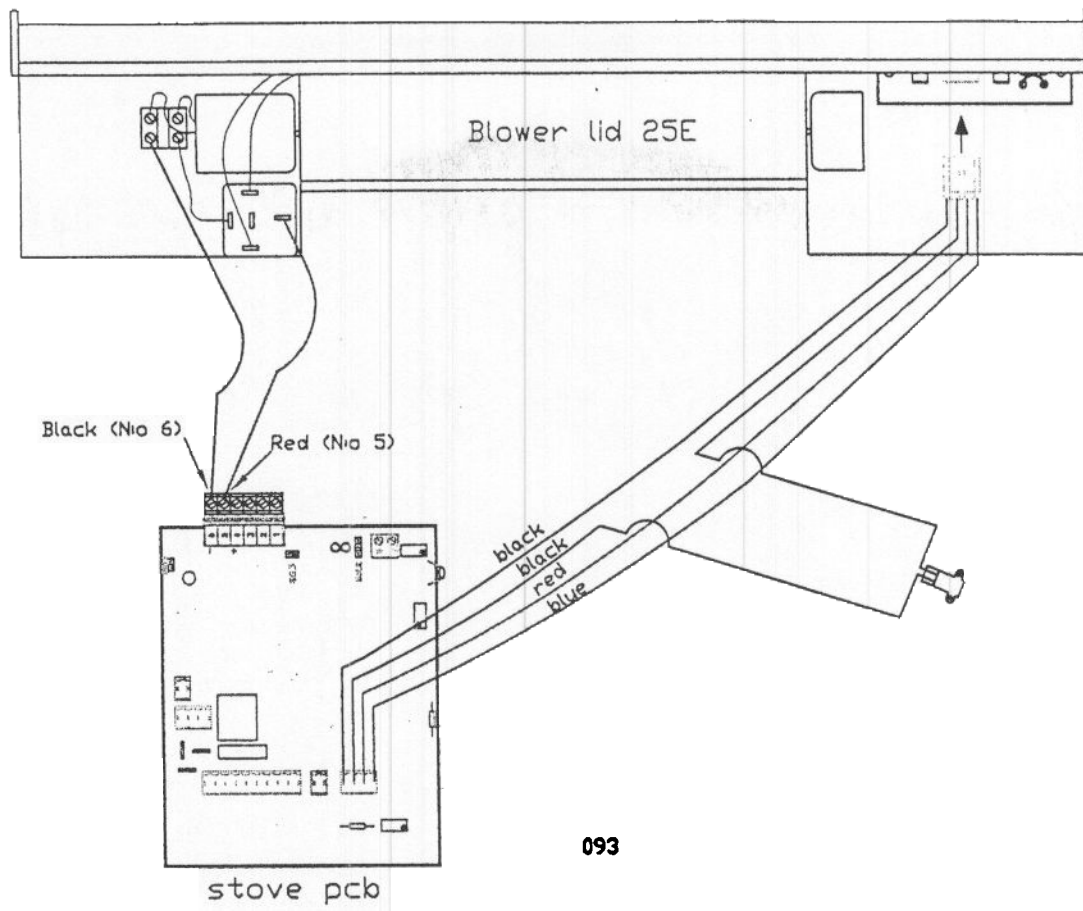
INSTALLATION INSTRUCTIONS



Mounting of the type 25 heat blower lid on ceramic stoves 95DP to make a 125DP.

- A - Place the separate blower unit 1, with lid 2 to the rear of the stove 3 so that the plate lip 6 goes in the slit 7 in the rear of the stove. The screw holes 4 shall line up with the holes 5 in the stove. Four screws 8 are then inserted and tightened.
- B - Connect the free connector 9 at the end of the blower cable in the stove to the connector 10 on the blower unit. For this first remove the by-pass connector piece 11 from the connector 9. Store this by-pass connector for a possible future need to use the stove without the blower lid. The stove will not work without the blower unit unless the by-pass connector 11 is connected to the blower unit connector 9. **CAUTION!** Ensure that connector 9 is oriented properly before inserting into connector 10.
- C - Finally check that the blower unit works and lid stays up when raised. The blower starts when the stove is switched on and the lid is lowered. The blower is switched off when the lid is raised. After switching off the stove the blower stops first after cycling the after-cooling cycle of about 10 min.

25E Electric connections



093

Wallas Safeflame Ceramic Diesel 125DP

===== SPECIAL INSTALLATION INSTRUCTIONS =====

Notice the recommendations in the following installation situations:

Figure 1. The fuel level is below the heater/stove

- Recommended installation situation
- No special equipments needed

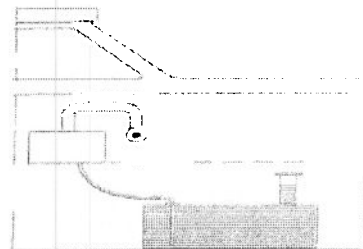


Figure 1

Figure 2. The fuel level can temporarily rise above the heater/stove bottom (for example in the fuel tank filling tube or because of the heel angle of the boat).

- No special equipments needed

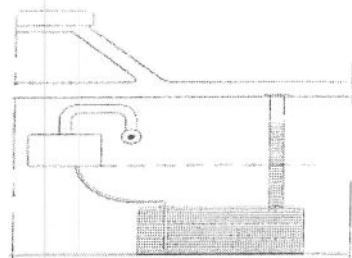


Figure 2

Figure 3. The fuel level lies above the heater/stove bottom

- Not recommended installation situation
- A magnetic valve (30012) must be installed to the fuel pipe near the tank

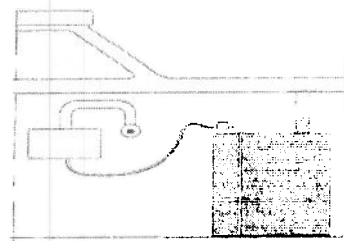
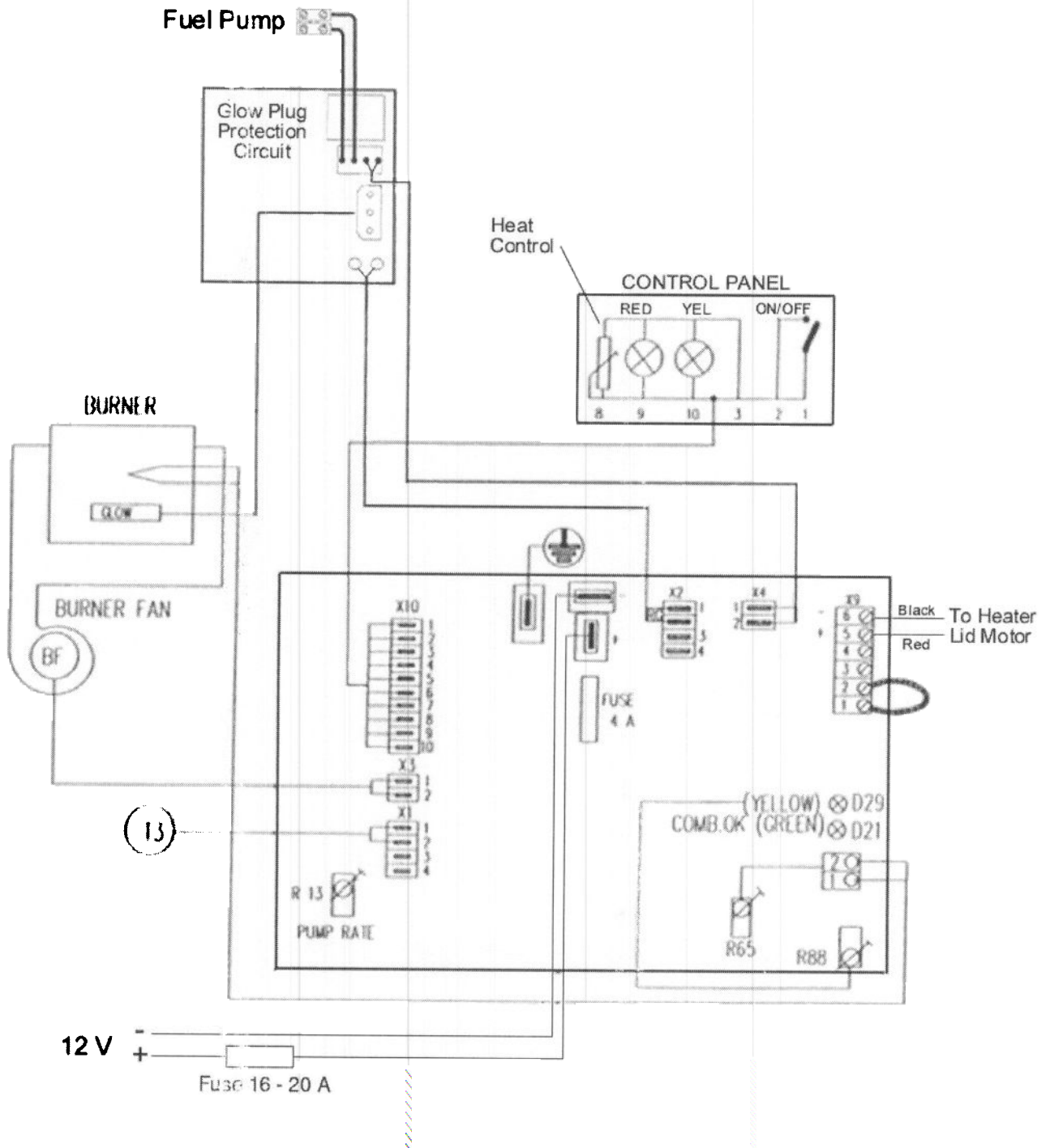


Figure 3

Note: No need to adjust the pump capacity if the heater/stove with a 4 meter fuel pipe is installed 1 meter below or above the average fuel level of the tank. Outside of these dimensions please contact your dealer or importer for special adjustment instructions.

Wallas Safeflame Ceramic Diesel 125DP

Schematic Diagram



Wallas Safeflame Ceramic Diesel 125DP

IMPORTANT TO OBSERVE

For use with Wallas heaters and cookers
OLD FUEL - WATER IN FUEL

Long storage can cause water condensation in tanks that are less than full.

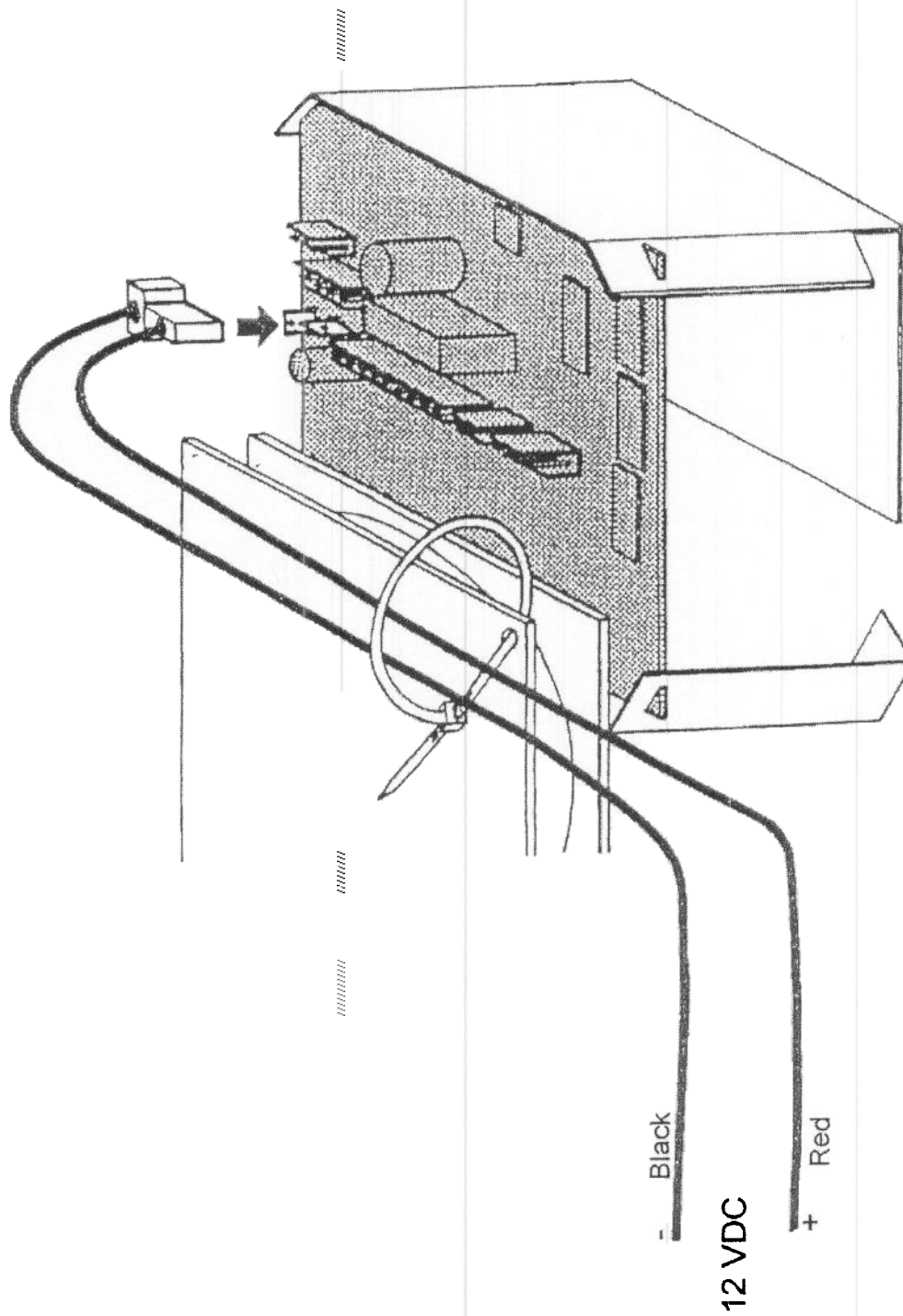
Which in turn produces wax in diesel or kerosene fuel.

This will clog fuel pumps, fuel filters, and burners - it is suggested that 3-5% isopropyl alcohol be mixed with the fuel.

Use only Isopropyl / Propanol based carburetor spirits - **not** Ethyl / Methyl based spirits.

Wallas Safeflame Ceramic Diesel 125DP

Power Connection



Wallas Safeflame Ceramic Diesel 125DP

Installation Checklist

☐ The area along the bottom front and the back wall of the stove is not blocked to allow air flow for ventilation under the stove.

☐ Ensure sufficient circulation of air in the boat.

☐ The rated voltage of the device is 12 VDC.

☐ The current for the device is taken directly from the battery terminals or a battery bus using as short cables as possible. See table 1.

Table 1

Cable Length (ft)	Wire Size (AWG)
0 - 13	10
13 - 20	8
Over 20	6

☐ A 16 - 20Amp main fuse is installed to the positive current cable, near the battery.

☐ The fuel for the unit is from a separate tank or from a separate tank pickup, not through the engine pickup.

☐ If fuel is drawn from the main tank, a filter is installed in the fuel line. Note the need for replacing the filter periodically.

☐ Tighten the fuel line joints carefully and firmly. Ensure that the joint surfaces are clean before tightening.

☐ If the stove is situated lower than the fuel surface in the tank, install a solenoid valve in the fuel line close to the fuel tank.

☐ Cut the fuel hoses to a suitable length during installation

☐ Note the heat of the exhaust while choosing the place for installing the thruhull.

☐ Any water entering to the thruhull is prevented from reaching the stove by using a gooseneck, a drainage lock or a sealable exhaust fitting.

☐ Boats with a metal hull must have isolation of the stove and its thruhull from the hull of the boat to prevent galvanic corrosion.

☐ Before installing the unit, read the instructions for installation, operation and service.

Wallas Safeflame Ceramic Diesel 125DP

Warranty Terms

Wallas-Marin (manufacturer) is through the importer liable for any raw material and manufacturing defects for 12 months from the purchase date on the following conditions.

1. The defect must be reported as soon as it appears. A valid purchase receipt is required.
2. The warranty covers material and manufacturing defects, provided that the manufacturer's instructions for installation and use have been followed.
3. For repairs under warranty, the customer shall deliver the device to the nearest Wallas retailer or authorized maintenance shop. After-sales service will not be carried out in the field or in the boat.
4. The warranty is not valid, if parts of foreign origin have been added to the device or its structure has been altered without the importer's or manufacturer's consent.
5. Faults or defects caused by natural wear and tear, incorrect handling, unsuitable fuel, undervoltage, overvoltage or water damage do not entitle to warranty claims.
6. Repairs carried out during the warranty period do not renew or change the original warranty period.
7. In order for us to be able to provide a high standard of service, the retailer has to keep a register of buyers so that they can be notified of any technical information, adjustment or updating needs after the warranty period.